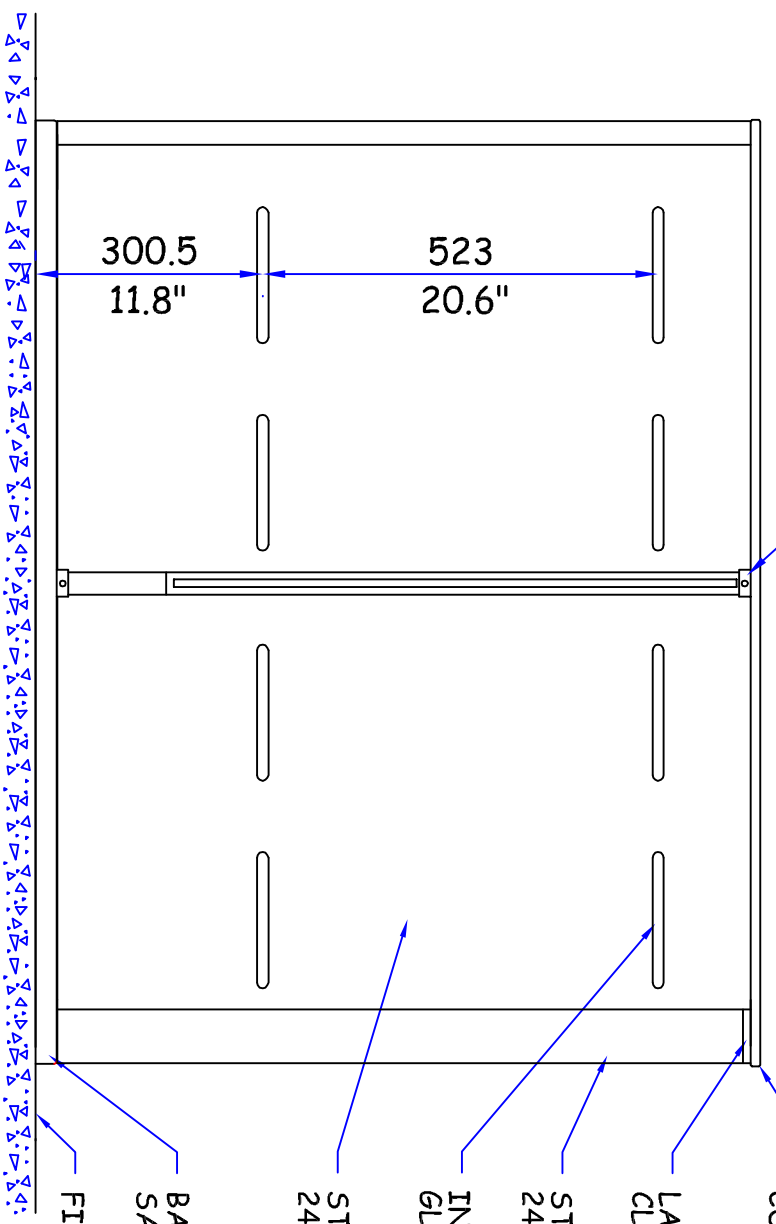
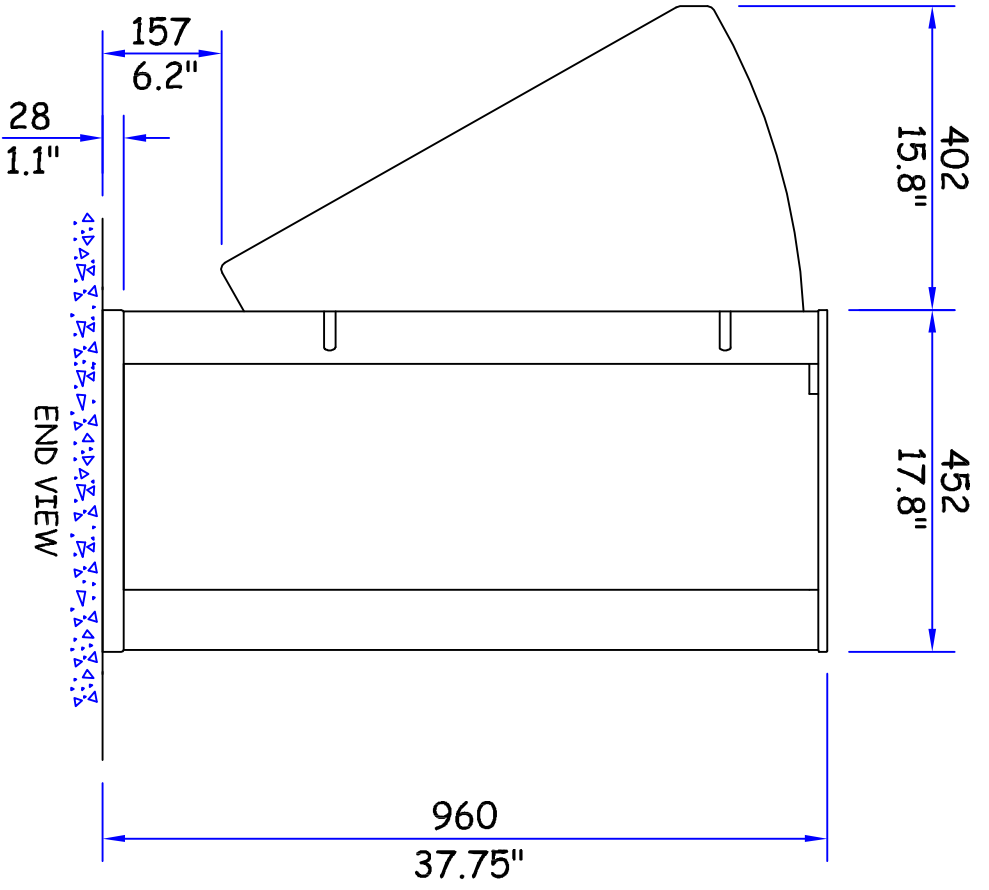
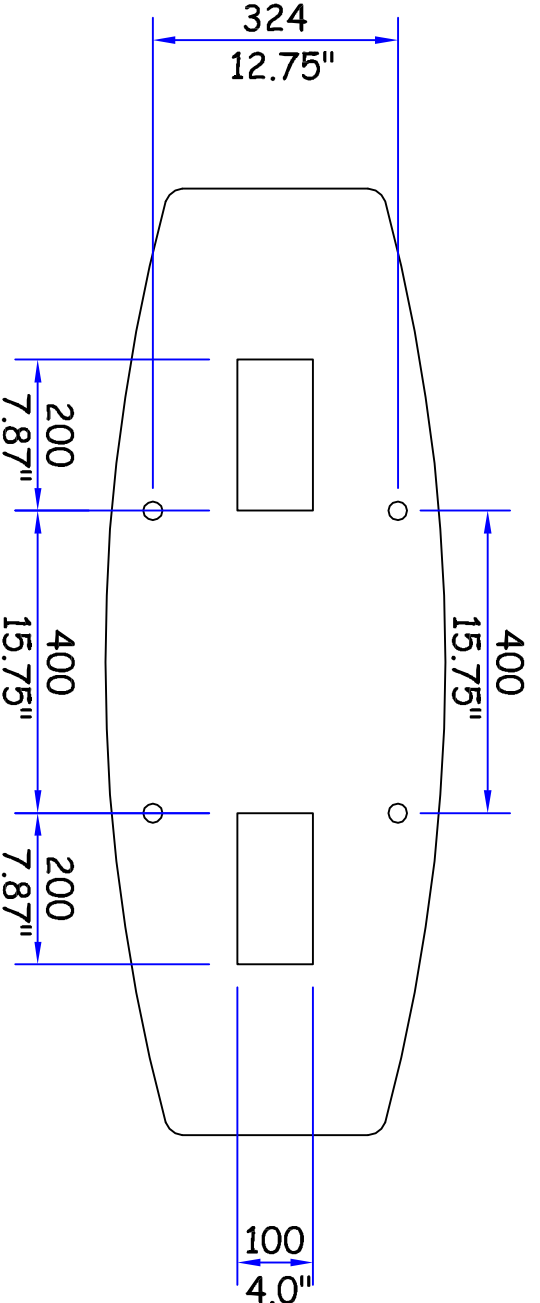


SIDE PANEL RETAINER - GLOSS BLACK ACRYLIC
 10mm CLEAR GLASS WING TOUGHENED TO BS 6206

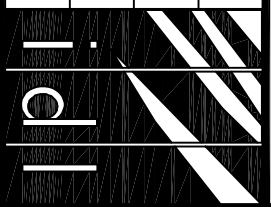


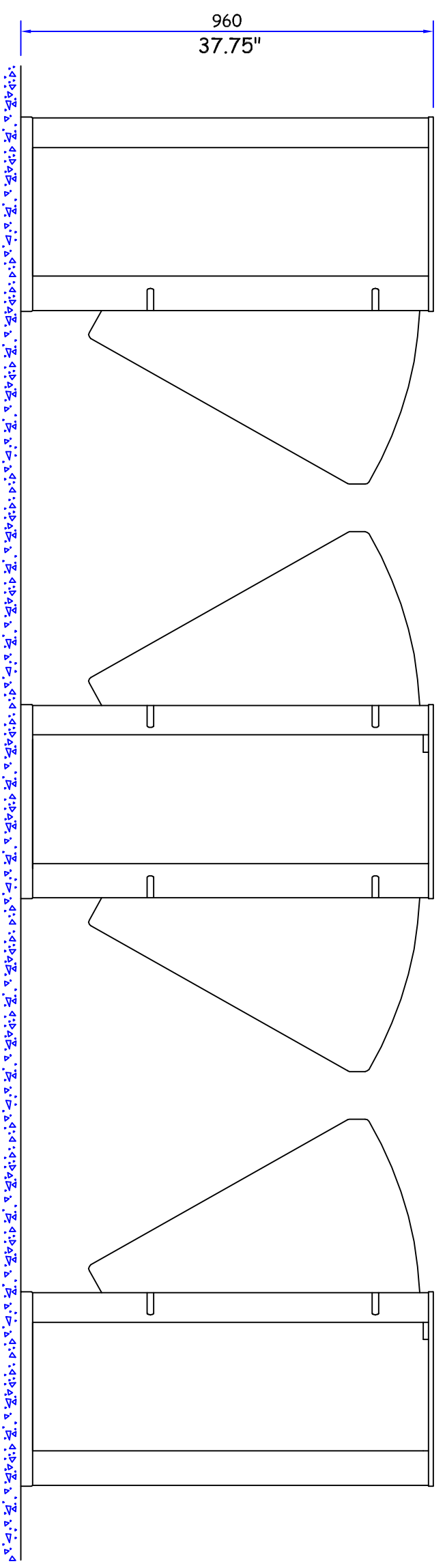
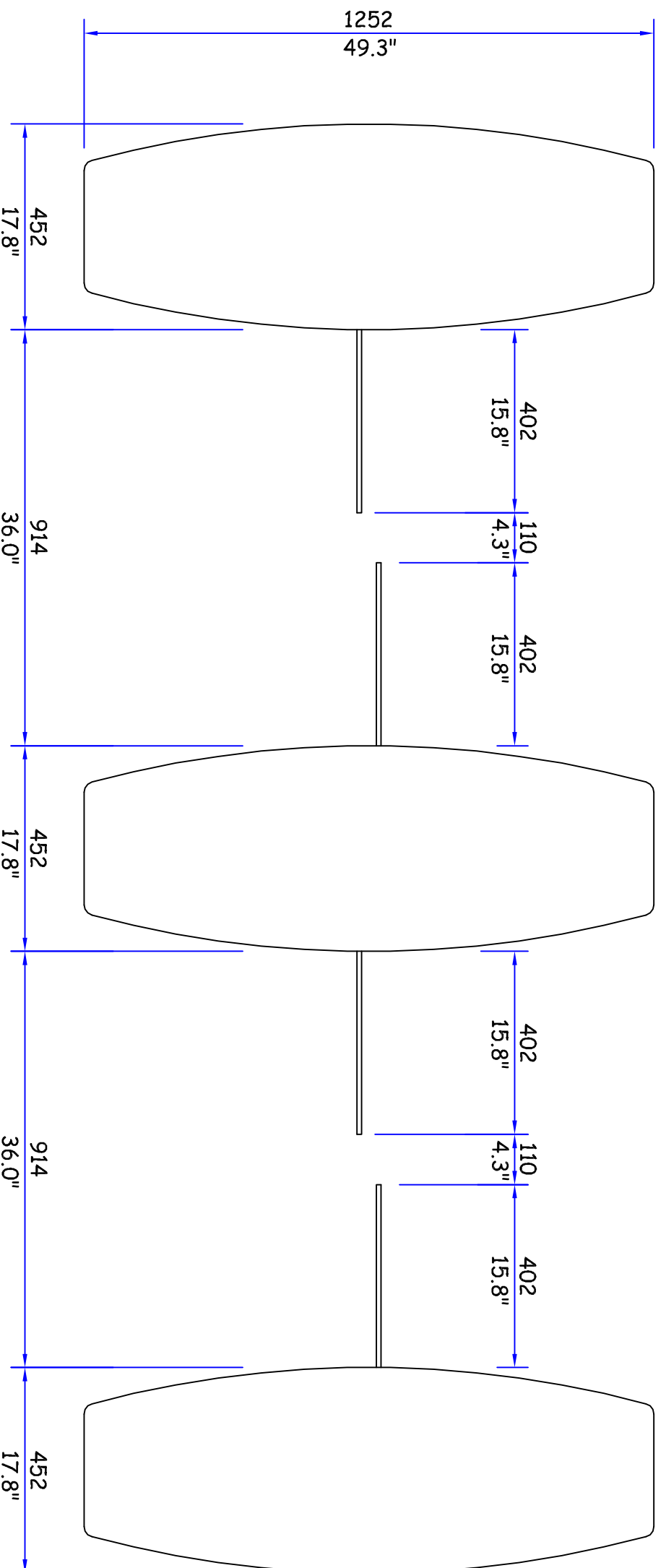
DECORATIVE TOP - CORIAN 'MIDNIGHT'
 LANE STATUS INDICATOR - CLEAR FROSTED ACRYLIC
 STAINLESS STEEL END - 240 GRIT - HORIZONTAL GRAIN
 INFRA-RED WINDOW - GLOSS BLACK ACRYLIC
 STAINLESS STEEL SIDE PANEL - 240 GRIT - HORIZONTAL GRAIN
 BASEPLATE - SATIN BLACK MILD STEEL
 FINISHED FLOOR LEVEL



OVERALL FINISHED WEIGHT OF PEDESTAL - TBA

PRODUCT: GLASSWING DDA	
TITLE: GENERAL DIMENSIONS	
DRAWN: RST	DRAWING No: S665_490_A0
DATE: 27.3.08	This document is the copyright of Integrated Design Ltd



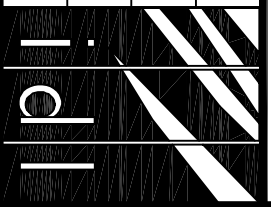


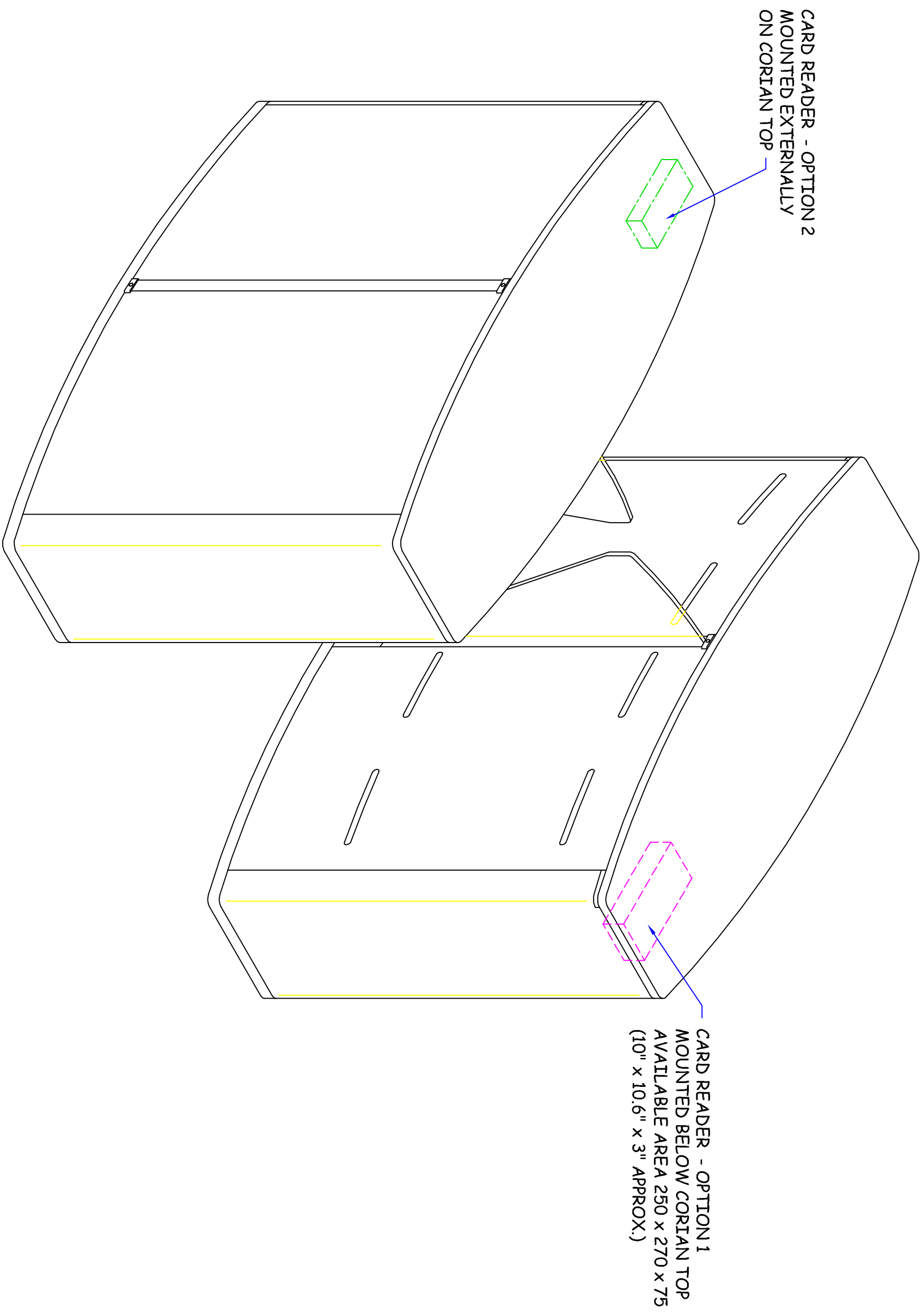
PRODUCT: GLASSWING DDA

TITLE: GENERAL LAYOUT

DRAWN: RST DRAWING No: 5665_491_A0

DATE: 27.3.08 This document is the copyright of Integrated Design Ltd



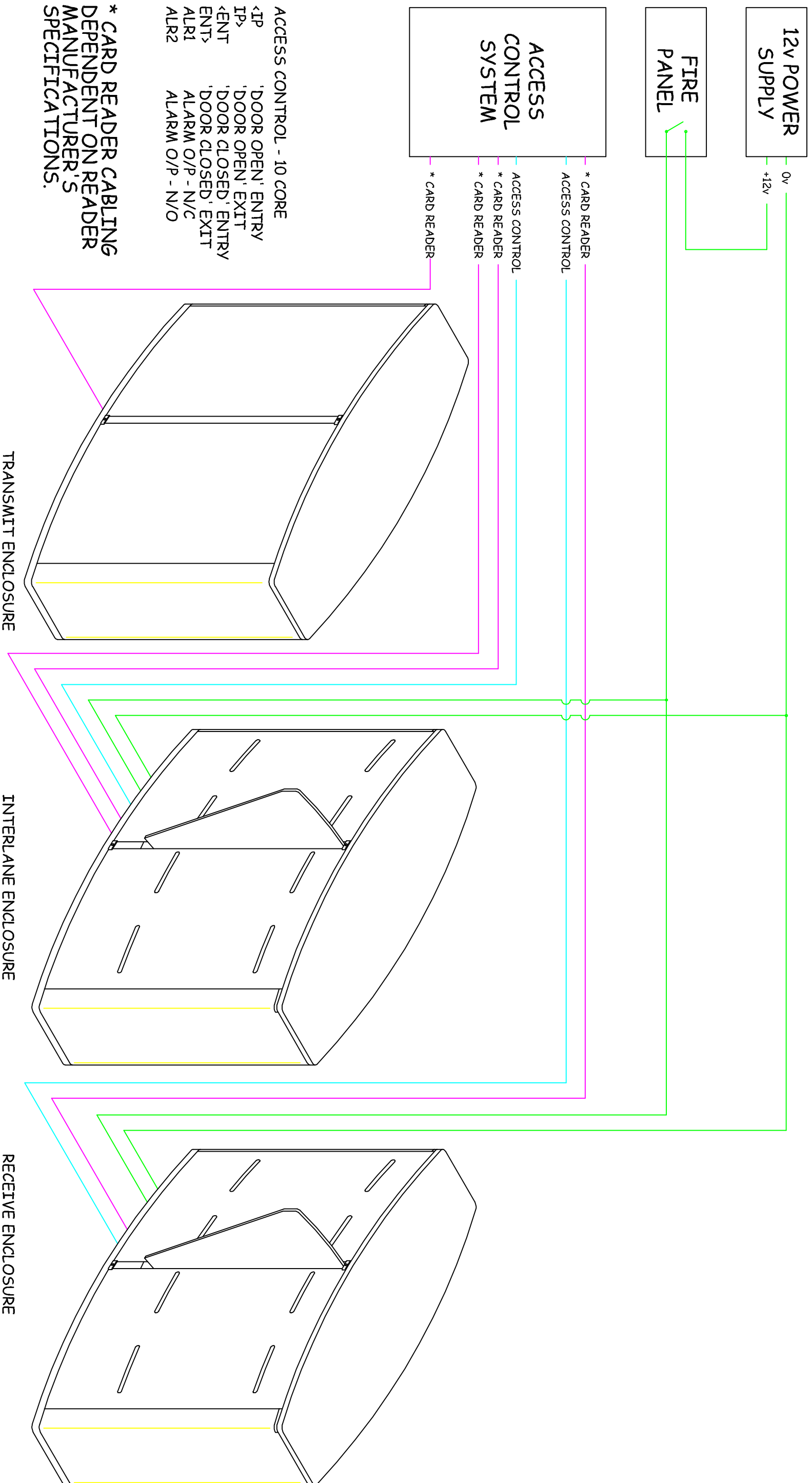


CARD READER - OPTION 2
MOUNTED EXTERNALLY
ON CORIAN TOP

CARD READER - OPTION 1
MOUNTED BELOW CORIAN TOP
AVAILABLE AREA 250 x 270 x 75
(10" x 10.6" x 3" APPROX.)

PRODUCT: GLASSWING DDA	
TITLE: CARD READER OPTIONS	
DRAWN: RST	DRAWING No: 5665_493_A0
DATE: 27.3.08	This document is the copyright of Integrated Design Ltd





THIS DRAWING SHOWS THE ACCESS CONTROL INTEGRATION REQUIREMENTS. IT IS TO BE READ IN CONJUNCTION WITH DRAWING 665_497_A0 WHICH SHOWS THE GLASSWING CABLING REQUIREMENTS.

FOR FURTHER INFORMATION, REFER TO THE INSTALLATION MANUAL.

PRODUCT: GLASSWING DDA	
TITLE: CABLING REQUIREMENTS	
DRAWN: RST	DRAWING No: 5665_498_A0
DATE: 27.3.08	

This document is the copyright of
Integrated Design Ltd

